



Welcome!

**South Side Healthy
Community Organization**

**Town Hall Community Meeting
November 16, 2021**

Agenda

1. **Welcome & Overview**

Rashard Johnson, CEO of Advocate Trinity Hospital & Chair of the SSHCO Board of Directors

2. **Healthcare Transformation Collaborative**

Kimberly McCullough-Starks, Illinois Department of Healthcare and Family Services

3. **Status Update**

Barrett Hatches, CEO of Chicago Family Health Center & Vice Chair of the SSHCO Board of Directors

4. **Board of Directors Overview**

Veronica Clarke, CEO of TCA Health

5. **Introduction to Community Board Members**

Diahann Sinclair, Vice President/Organizational and Community Development, St. Bernard Hospital

6. **Community Feedback**

Christa Hamilton, CEO of UCAN

7. **Q&A**

Cecile DeMello, CEO of Teamwork Englewood

Healthcare Transformation (noun)

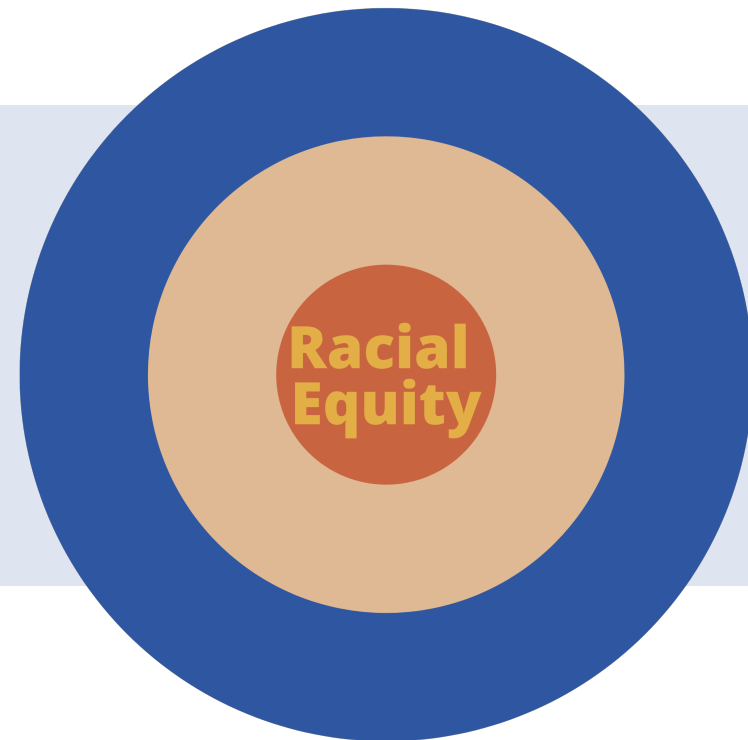
'health-care trans-for-ma-tion'

a person-centered, integrated, equitable, and thorough or dramatic change in the delivery of healthcare at a community level

Advancing Racial Equity: Key Focus of HTC



- Catalyzing structural solutions to systemic problems
- Realigning resources to support and drive equity-centric transformational projects



Why Healthcare Transformation Collaboratives?

**The status quo is
not bringing the
results people
want or deserve**



THE CURRENT LACK OF...

- Access to care (due to logistic, economic, cultural, and healthcare literacy barriers)
- Stability in the critical healthcare delivery system
- Coordinated, cross-agency focus on Social Determinants of Health

LEADS TO...

- Inconvenient, inconsistent, expense-ridden care that's often not culturally competent
- Care that does not focus on Chronic Disease management
- Care that doesn't fit people's lives

RESULTING IN...

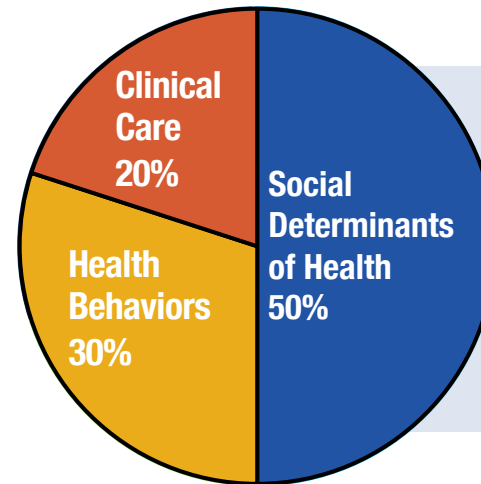
- **Poor health outcomes.**

Social determinants account for 50% of health outcomes



Clinical care accounts for no more than 20% of a person's health and individual health behaviors, no more than 30%¹.

A full 50% of health can be attributed to social determinants of health, the broad term that includes social, economic, and environmental factors.



- Economic stability
- Education
- Housing
- Transportation
- Food security
- Social support networks
- Environmental quality

¹ Hood, C. M., K. P. Gennuso, G. R. Swain, and B. B. Catlin. 2016. County health rankings: Relationships between determinant factors and health outcomes. *American Journal of Preventive Medicine* 50(2):129-135. <https://doi.org/10.1016/j.amepre.2015.08.024>

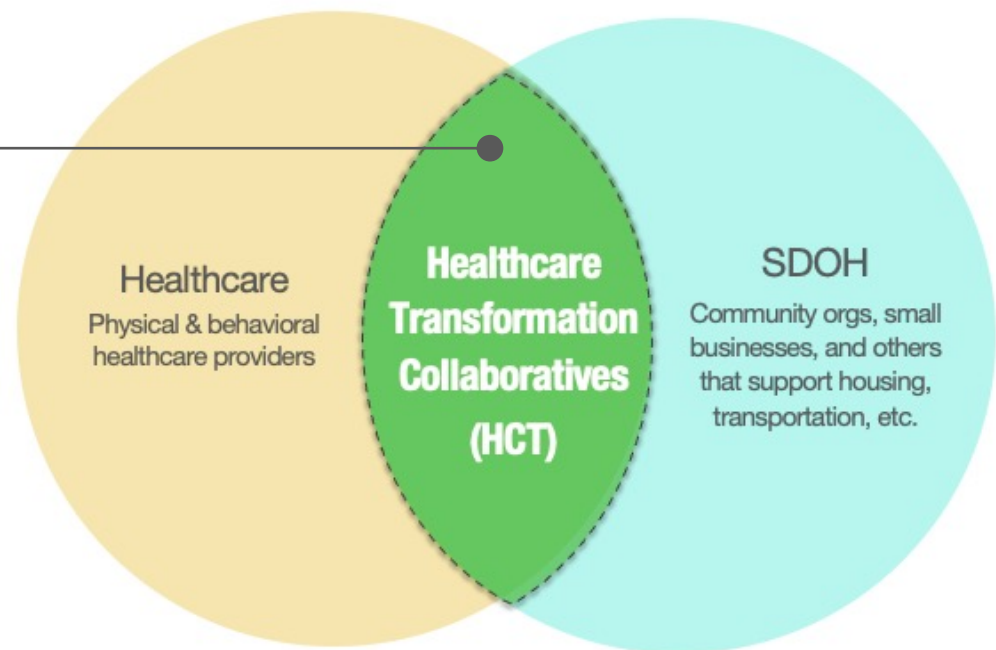
**People's health needs cannot be addressed
by healthcare systems alone.**

To change the status quo, HFS is seeking Healthcare Transformation Collaboratives to provide for peoples physical, mental and social needs



HFS is seeking to fund Healthcare Transformation Collaboratives:

Cross-provider partnerships working together in a coordinated fashion in Illinois communities to care for people’s physical, mental and social needs in order to transform health outcomes and reduce racial inequities.



Why HFS funded the SSHTP

A collaborative driven by community input and dedicated to fundamentally advancing health care access and better health outcomes for Chicago's South Side residents.

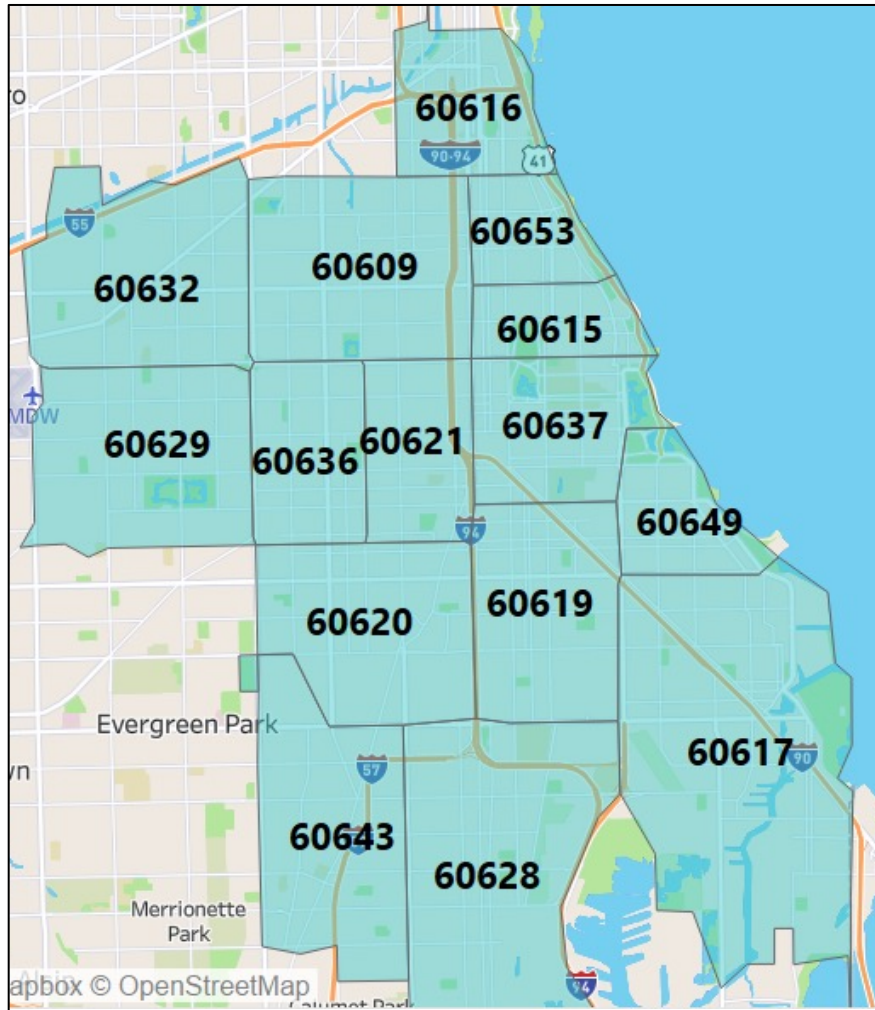


Key Accomplishments

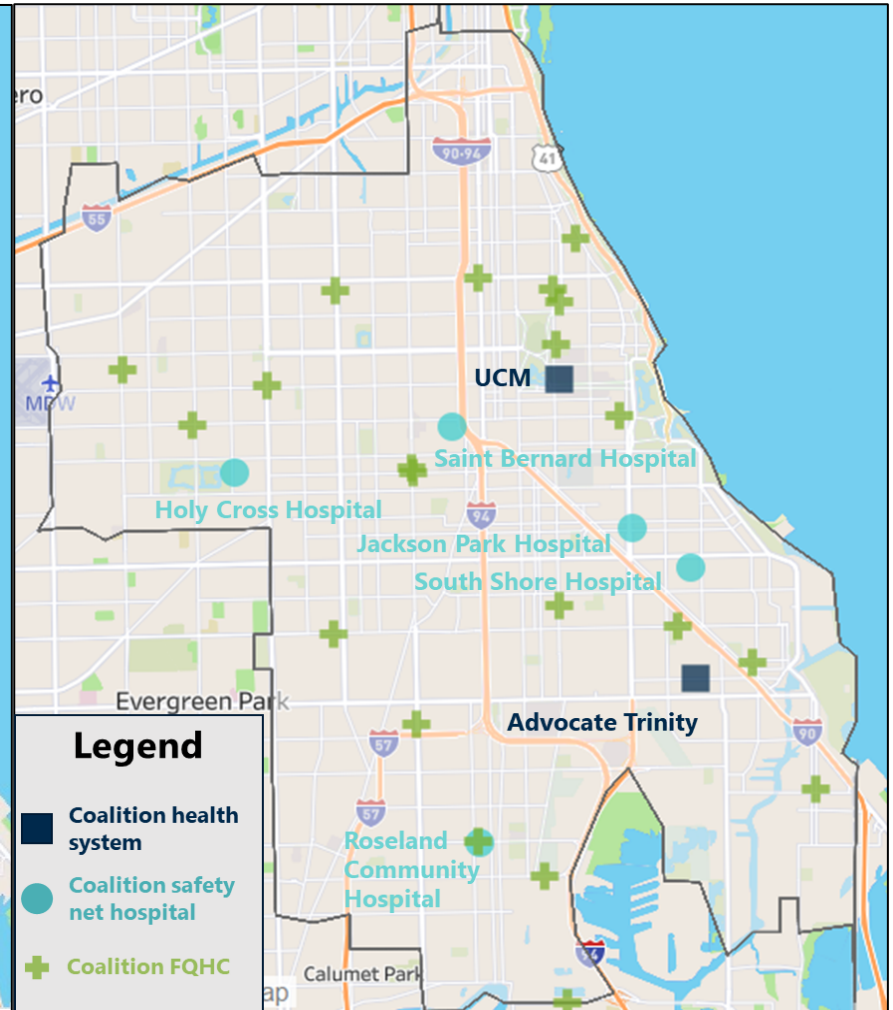
- ✓ Filed Articles of Incorporation, allowing Healthy Community Organization to operate as an organization (501(c)(3) status underway)
- ✓ Launched a collaborative 13-organization Implementation Team to further build out the Healthy Community model
- ✓ Launched a CEO Search Process (actual search to begin Winter 2021/2022)
- ✓ Formed a Board of Directors

Geography Served by the SSHCO

ZIP CODES SERVED BY SSHCO



PARTICIPATING COALITION ORGANIZATIONS



The South Side Healthy Community Model

Key themes from our community engagement and feedback sessions, which became the basis for the **Healthy Community Organization** model.



SCOPED TO **SERVE OVER 400K SOUTH SIDERS** WITH BETTER, MORE SEAMLESS & MORE ACCESSIBLE CARE
Through an unprecedented collaboration of the regions' FQHCs, safety net hospitals and health systems



INCREASE & ENHANCE PRIMARY CARE AND DRAMATICALLY IMPROVE MATERNAL / INFANT HEALTH
WITH 90 ADDITIONAL PCP & OB HIRES



ADDRESS UNMET CHRONIC DISEASE & BEHAVIORAL NEEDS
WITH DEDICATED ACCESS TO NEARLY 50 PRIORITY SPECIALISTS



ADDRESS CARE COORDINATION NEEDS, SOCIAL DETERMINANT NEEDS AND PREVENTATIVE CARE
WITH ~250 CHWs & CARE COORDINATORS AND TARGETED SDOH PROGRAMMING



SEAMLESSLY TRANSITION CARE & SHARE DATA WITH A **CONNECTED CARE TECHNOLOGY PLATFORM**

We Will:

REVERSAL OF LONGSTANDING HEALTH DISPARITIES

Reduced Infant Mortality

Reduced Chronic Disease Morbidity

Enhanced Life Expectancy

REDUCED COSTS & IMPROVED ECONOMIC SUSTAINABILITY

Improved Value & Outcomes per Dollar

More Care Delivered Locally

Over 400 New Jobs Created

To Achieve:

SSHCO Year 1 Milestones



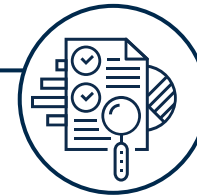
SCALE MILESTONES

15 PCP and OB providers – physicians, APPs and care extenders – recruited or otherwise added into participant sites

7 specialists providing services via lease, coverage or hire arrangements

80 CHWs / care coordinators / social workers recruited into the model, including 20 members of centralized team

All coalition partners have access to early connected care functionality



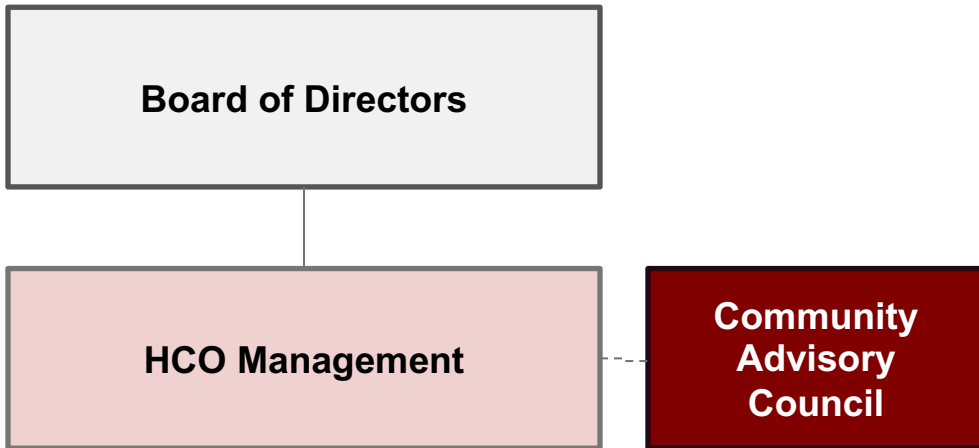
OUTCOME MILESTONES

Meet Year 1 outcome metrics as agreed upon by the Coalition and HFS:

- Access to Preventative Care
- Controlling HBP
- Follow-up after hospitalization for MI
- Follow-up after ED for alcohol/substance abuse

Underpinning these deliverables is a commitment to equitable hiring practices to achieve diversity in hires, cultural competency training, and community engagement along the way.

SSHCO Governance Structure



Board Member	Organization
Verneda Bachus	Friend Family Health
Brenda Battle	The University of Chicago Medical Center
Kenneth Burnett	Christian Community Health Center
Veronica Clarke	TCA Health
Cecile DeMello	Teamwork Englewood
William Dorsey, MD	Jackson Park Hospital and Medical Center
Tim Egan	The New Roseland Community Hospital Association
Christa Hamilton	UCAN
Barrett Hatches	Chicago Family Health Center
Margie Johnson	Beloved Community Family Wellness Center
Rashard Johnson	Advocate Trinity Hospital
Berneice Mills-Thomas	Near North Health
Rev. Otis Moss III	Trinity United Church of Christ
Leslie Rogers	South Shore Hospital
Diahann Sinclair	St. Bernard Hospital
Airica Steed	Sinai Chicago
CEO	TBD

Cecile DeMello
Executive Director of Teamwork Englewood



Christa Hamilton
CEO and President of UCAN



Reverend Doctor Otis Moss, III
Senior Pastor-Trinity United Church of Christ



Community Engagement

- ✓ MWBE and BEP Commitment
- ✓ Jobs
- ✓ Community Advisory Council
- ✓ Poll

Stay Connected with us!

New Website: SouthSideHealthyCommunity.com

Follow and Like us:



[@SSHealthyCommunity](https://www.facebook.com/SSHealthyCommunity)

Email: SouthSideHealthyCommunity@gmail.com